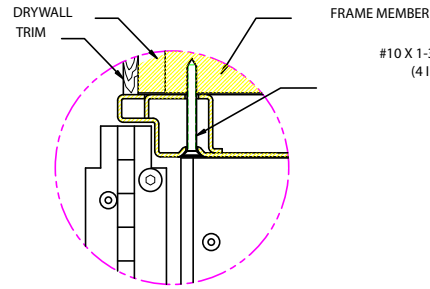


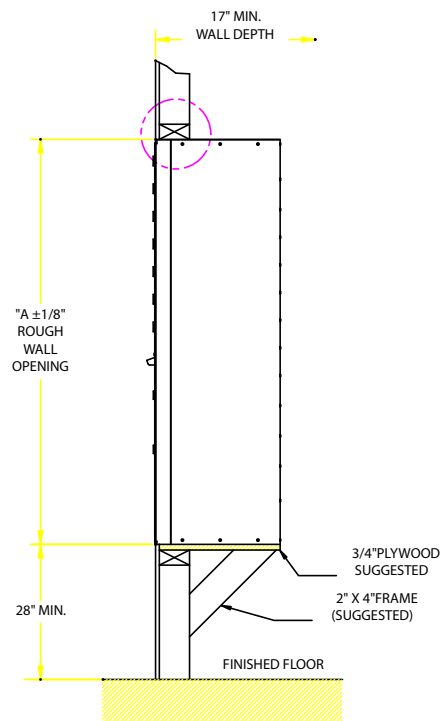
ROUGH WALL OPENING

UNIT SIZE	ELEVATION DIMENSION "A ±1/8"
TYPE II-16	41-7/8"
TYPE II-8	31-3/4"

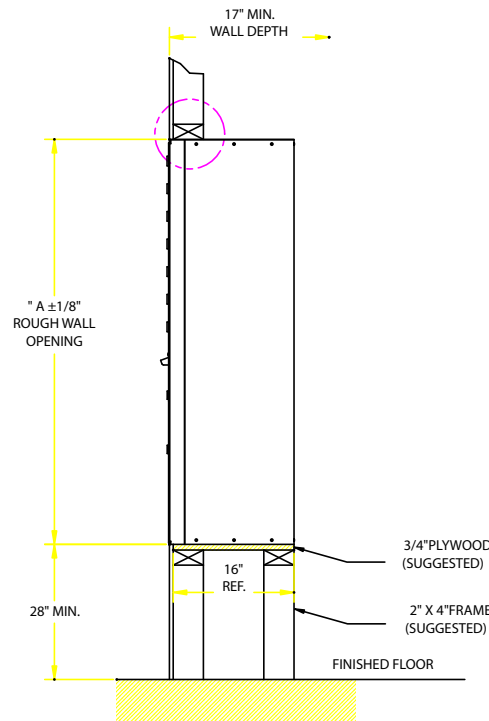


30-1/4" MULTIPLIED BY THE
NO. OF UNITS EQUALS THE
ROUGH OPENING WIDTH

REVISIONS			
REV.	DATE	DESCRIPTION	CHKD

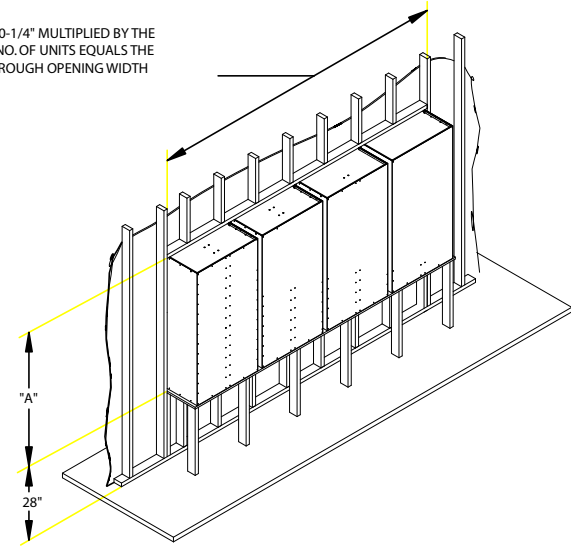


METHOD 1



METHOD 2

NOTE:
REFER TO ARCHITECT'S CONSTRUCTION
DRAWING FOR WALL DETAILS.



INSTALLATION NOTES:

- 1.) CUT OPENING AT DESIRED LOCATION TO ROUGH OPENING DIMENSIONS.
- 2.) CONSTRUCT STURDY PLATFORM FOR THE MAILBOX.
- 3.) INSERT MAILBOX INTO THE OPENING, SET ON TOP OF THE PLATFORM. SHIM IF NECESSARY FOR GATES TO OPEN AND CLOSE FREELY.
- 4.) INSTALL AND TIGHTEN MOUNTING SCREWS (4 ON TOP, 4 ON THE BOTTOM).
- 5.) INSTALL NEXT GROUP OF BOXES (IF DESIRED) SAME AS ABOVE
- 6.) INSTALL EDGE TRIM (NOT SUPPLIED) IF DESIRED.

RECOMMENDED MOUNTING DETAILS FOR FRONT LOADED

HORIZONTAL CENTRALIZED MAILBOXES

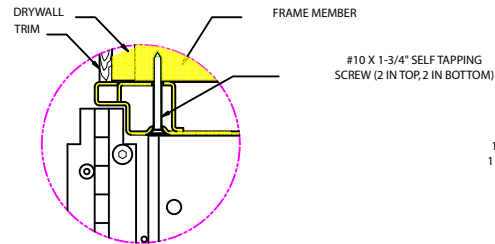
THIS DRAWING IS THE PROPERTY OF POSTAL PRODUCTS UNLIMITED, INC. THIS DRAWING IS FURNISHED WITH THE EXPRESS AGREEMENT THAT IT IS NOT TO BE REPRODUCED OR TRANSMITTED IN ANY FORM OR BY ANY MEANS, ELECTRONIC OR MECHANICAL, INCLUDING PHOTOCOPYING, RECORDING, OR BY ANY INFORMATION STORAGE AND RETRIEVAL SYSTEM, WITHOUT THE WRITTEN PERMISSION OF POSTAL PRODUCTS UNLIMITED, INC. ACCEPTANCE OF THIS DRAWING ACTS AS ACCEPTANCE OF THE FOREGOING CONDITIONS.

TOLERANCES (EXCEPT AS NOTED)		SCALE: NONE	DATE: 18 APR 2005	DESIGNED AND DRAWN BY: D.B.J.
DRAWING AND INFORMATION PROVIDED BY: WALMOUNT CENTRALIZED MAIL RECEPTACLE - TYPE II		AUTOCAD DWG.		DRAWN BY: D.B.J.
INSTALLATION METHODS		DWG NO.: B1005B		REVISED: *****
PLOT NO.: HZ4C-1105		SHEET: 1 OF 1		

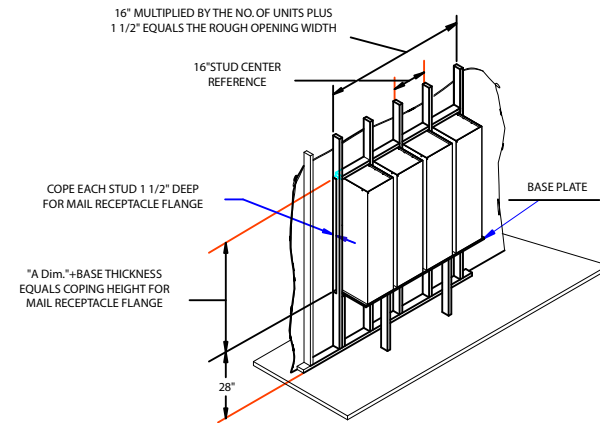
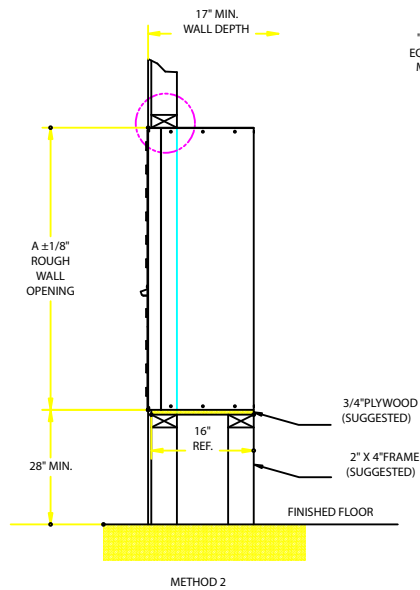
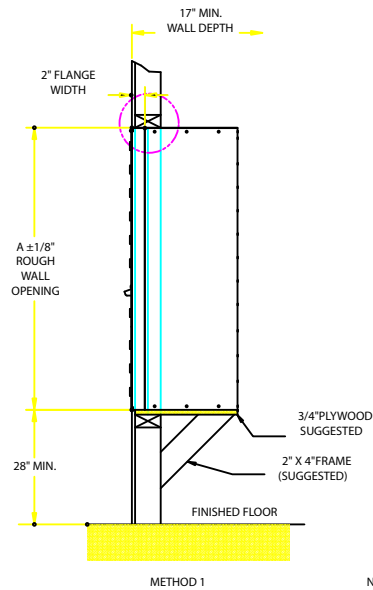
Postal Products Unlimited, Inc.
500 W. Oklahoma Ave.
Milwaukee, WI, 53207-2649

ROUGH WALL OPENING	
UNIT SIZE	ELEVATION DIMENSION "A $\pm 1/8$ "
TYPE VI-9	41-7/8"
TYPE VI-7	34 5/8"
TYPE VI-5	27 3/8"
TYPE VI-4	23-7/8"
TYPE VI-3	20"

UNIT SIZE	ELEVATION DIMENSION "A $\pm 1/8$ "
TYPE VI-9	41'-7/8"
TYPE VI-7	34'-5/8"
TYPE VI-5	27'-3/8"
TYPE VI-4	23'-7/8"
TYPE VI-3	20"



REVISIONS			
REV.	DATE	DESCRIPTION	CHK'D



INSTALLATION NOTES:

- 1) CUT OPENING AT DESIRED LOCATION TO ROUGH OPENING DIMENSIONS.
- 2) CONSTRUCT STURDY PLATFORM FOR THE MAILBOX.
- 3) INSERT MAILBOX INTO THE OPENING, SET ON TOP OF THE PLATFORM. SHIM IF NECESSARY FOR GATES TO OPEN AND CLOSE FREELY.
- 4) INSTALL AND TIGHTEN MOUNTING SCREWS (2 ON TOP, 2 ON THE BOTTOM).
- 5) INSTALL NEXT GROUP OF BOXES (IF DESIRED) SAME AS ABOVE
- 6) INSTALL EDGE TRIM (NOT SUPPLIED) IF DESIRED.

RECOMMENDED MOUNTING DETAILS FOR FRONT LOADED
HORIZONTAL CENTRALIZED MAILBOXES BETWEEN EXISTING
VERTICAL STUDS ON 16" CENTERS

NOTE:
REFER TO ARCHITECTS CONSTRUCTION
DRAWING FOR WALL DETAILS.

THIS DRAWING IS THE PROPERTY OF POSTAL PRODUCTS UNLIMITED, INC. THIS DRAWING IS FURNISHED WITH THE EXPRESS AGREEMENT THAT THE DRAWING AND INFORMATION THERE CONTAINED ARE THE PROPERTY OF POSTAL PRODUCTS UNLIMITED, INC. AND CAN NOT BE DISCLOSED OR IN ANYWAY REPRODUCED WITHOUT THE PRIOR WRITTEN CONSENT OF POSTAL PRODUCTS UNLIMITED, INC. ACCEPTANCE OF THIS DRAWING ACTS AS ACCEPTANCE OF THE FOREGOING CONDITIONS.

TOLERANCES
(EXCEPT AS NOTED)

HOLES= ±0.005
 ANGLES= ±37
 FRACTIONAL= ±1/16
 DECIMAL= 0 ±0.060
 .00 ±0.030

Postal Products Unlimited, Inc.
500 W. Oklahoma Ave.
Milwaukee, WI, 53207-2649

SCALE: NONE	AUTOCAD DWG.
DATE: 23AUG2005	

WALL MOUNT CENTRALIZED MAIL RECEPTACLE - TYPE

INSTALLATION METHODS

	H74C 0105		8888
--	-----------	--	------

DRAWN BY:	ARS
REVISED:	*****

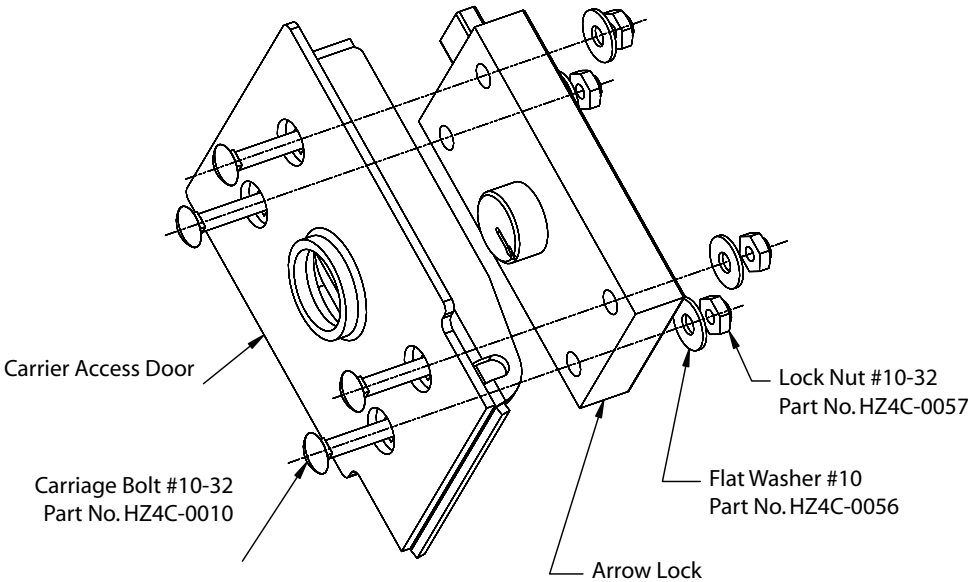
VI

DWG. NO.: B1205

1 OF 1

Installation of Postal Lock to Horizontal
Model HZ4C-8 Carrier Access Door

Note:
Arrow Lock (Not Supplied) to be
Installed by U.S. Postal Service
Using Provided Hardware



REVISIONS			
REV.	DATE	DESCRIPTION	CHKD.

THIS DRAWING IS THE PROPERTY OF POSTAL PRODUCTS UNLIMITED, INC. THIS DRAWING IS FURNISHED WITH THE EXPRESS AGREEMENT THAT THE DRAWING AND INFORMATION THEREIN CONTAINED ARE THE PROPERTY OF POSTAL PRODUCTS UNLIMITED, INC. AND CAN NOT BE REPRODUCED OR IN ANY MANNER REPRODUCED WITHOUT THE PRIOR WRITTEN CONSENT OF POSTAL PRODUCTS UNLIMITED, INC. ACCEPTANCE OF THIS DRAWING ACTS AS ACCEPTANCE OF THE FOREGOING CONDITIONS.

TOLERANCES
(EXCEPT AS NOTED)

HOLE: ± .005
ANGLE: ± .5°
FRACTURE: ± .1/16
DECIMAL: ± .0005
IN: ± .005 400 ± .0010

Postal Products Unlimited, Inc.
500 W. Oklahoma Ave.
Milwaukee, WI, 53207-2649

SCALE: 1/2	DRAWN BY: D.B.J.
DATE: 03MAR2005	REVIEWED: *****
AUTOCAD DWG.	
WALL MOUNT CENTRALIZED MAIL RECEPTACLE	
ARROW LOCK INSTALLATION	
PART NO: HZ4C-0118	OR NO: ****
SHEET: 1 OF	